



CHEMISTRY BUILDING WIRELESS CELLULAR ANTENNAS

UW Environmental Health & Safety (EH&S) provides the following safety information for University personnel who work in or near University locations where wireless cellular antennas are installed.

SITE INFORMATION

Address: 3790 Okanogan Lane NE, Seattle, WA 98195.

Carrier(s): T-Mobile

FCC Site # SE 01125A

Antenna type: Sector/Directional antennas

Co-locators: None

Location(s): Rooftop – on chimney stacks

Site access: Locked door

Last survey date: October 25, 2021

- This building consists of six antennas grouped together in three sectors on the chimney stacks.
- All measurements on accessible areas were below the limit for general public exposure to radiofrequency energy.

Location	RF Exposure Measurements	Hazard category
Street level	Less than 1% of FCC general public exposure limit	1
Accessible location on roof level	10% of FCC general public exposure limit	1

AERIAL VIEW OF THE ANTENNAS

Figure 1 shows an aerial view of the rooftop and chimney stacks where the antennas are located.

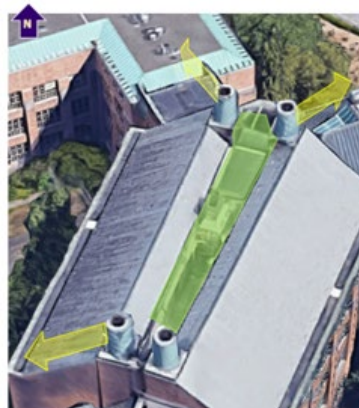
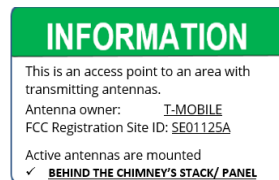


Figure 1: View from the roof.

SIGNS AND BARRIERS

- Green INFORMATION signs are located on the access door and on the chimney, stacks. These signs indicate the antenna owner and registration site information, and the location of the active antennas, which are behind the chimney stacks.
- The antennas are located on the chimney stacks which are not easily accessible.
- Yellow CAUTION signs are located directly below the chimney stacks. These signs indicate the radiofrequency energy *directly in front of the antennas* may exceed the occupational exposure limit.
- No additional exposure controls are required to work safely at this site.



WIRELESS CELLULAR ANTENNA LOCATIONS

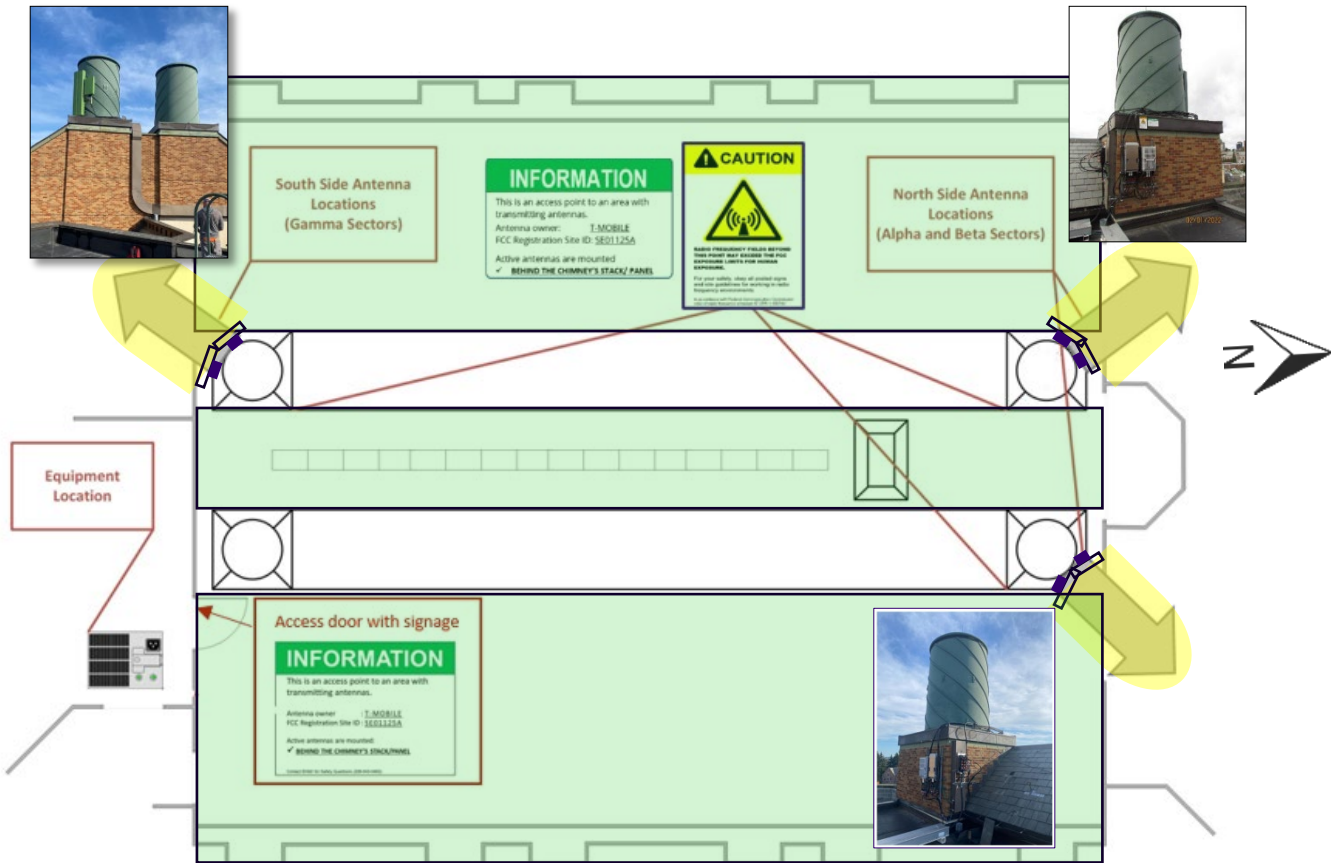


Figure 2: View looking down at the roof of Chemistry Building.

Symbols/ Color	Definitions	Signage
	Direction of mounted antenna or directional RF energy	NA
	Mounted antenna/panel	NA
Category 1	Area where RF fields are too weak to cause exposures greater than general public limit SAFE FOR GENERAL PUBLIC	No signage
Category 3	Area where RF fields could potentially be greater than occupational worker limit but less than five times the occupational limit. NOT SAFE FOR GENERAL PUBLIC. RESTRICTED FOR TRAINED WORKERS.	

Table 1: Symbols and color legends, definitions and required posting.

Area where radiofrequency energy could potentially be greater than occupational worker limit but less than five times the occupational limit.

Visit the [Radiofrequency: Wireless Cellular Antennas](#) page on the EH&S website for more information. Contact EH&S at 206.543.0463 or radsaf@uw.edu with questions.