

UW BOTHELL: DISCOVERY HALL WIRELESS CELLULAR ANTENNAS



UW Environmental Health & Safety (EH&S) provides the following safety information for University personnel who work in or near University locations where wireless cellular antennas are installed.

SITE INFORMATION

Address: 11122 NE 180th St, Bothell
Carrier(s): T-Mobile
FCC Site # SE02739A
Antenna type: Sector/Directional antennas
Co-locators: None
Location(s): Rooftop – on parapets
Site access: Locked door (2)
Last survey date: November 8th, 2023

- This building consists of six antennas grouped together in three sectors on the chimney stacks.
- All measurements on accessible areas were below the limit for general public exposure to radiofrequency energy.

Location	RF Exposure Measurements	Hazard category
Main roof level	Less than 20% of FCC occupational exposure limit	1
4 th floor indoor level	Less than 1% of FCC occupational exposure limit	1

AERIAL VIEW OF THE ANTENNAS

Figure 1 shows an aerial view of the rooftop where the antennas are located.

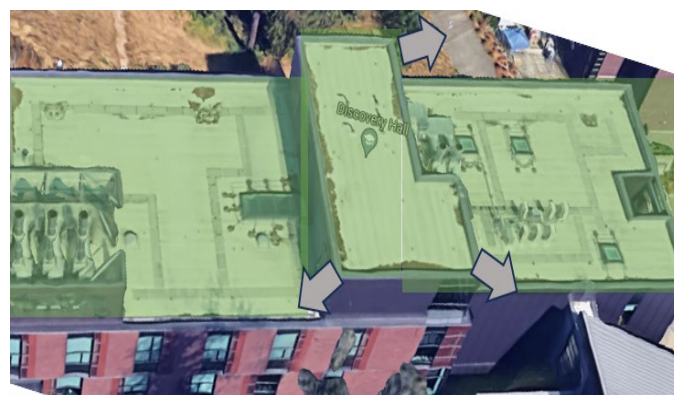
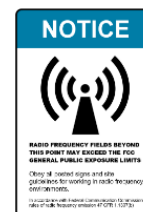


Figure 1: View from the roof.

SIGNS AND BARRIERS

- Each sector (Gamma, Beta, and Alpha) is posted with a **blue NOTICE sign** that indicates the area *directly in front of the antennas* contains electromagnetic energy that may exceed the FCC's exposure limit for the general public but is *less than the occupational exposure limit*.
- Access doors also indicate the antenna owner and registration site information.
- No additional barriers or stanchions are required at this site.



WIRELESS CELLULAR ANTENNA LOCATIONS

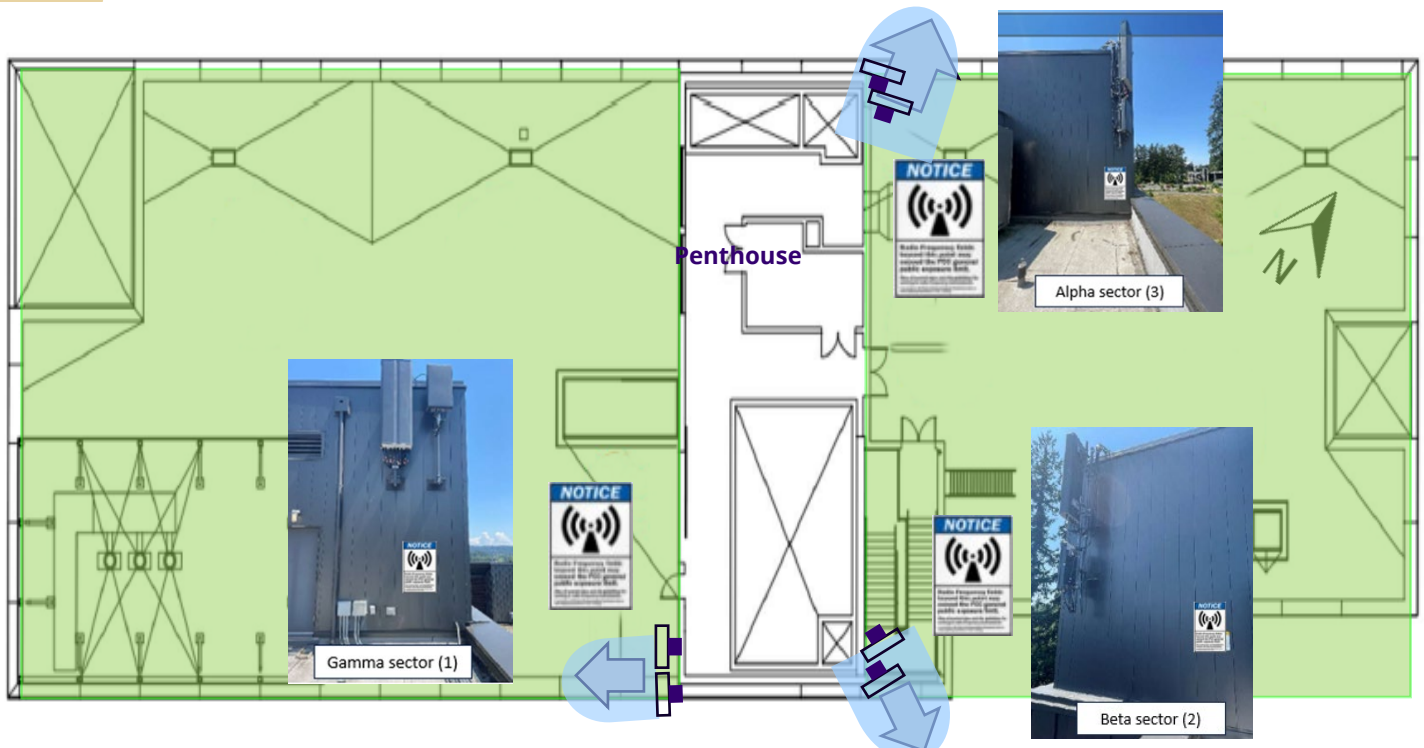


Figure 2: View looking down at the roof of Chemistry Building.




Symbols/ Color	Definitions	Signage
	Direction of mounted antenna or directional RF energy	NA
	Mounted antenna/panel	NA
Category 1	Area where RF fields are too weak to cause exposures greater than general public limit SAFE FOR GENERAL PUBLIC	No signage
Category 2	Area where RF fields could potentially be greater than general public limit but less than occupational limit NOT SAFE FOR GENERAL PUBLIC BUT SAFE FOR WORKERS.	

Table 1: Symbols and color legends, definitions and required posting.

Visit the [Radiofrequency: Wireless Cellular Antennas](#) page on the EH&S website for more information.

Contact EH&S at 206.543.0463 or radsaf@uw.edu with questions.