



LANDER HALL WIRELESS CELLULAR ANTENNAS

UW Environmental Health & Safety (EH&S) provides the following safety information for University personnel who work in or near University locations where wireless cellular antennas are installed.

SITE INFORMATION

Address: 1101 NE Campus Drive Lander Hall
Carrier (s): AT&T Wireless
FCC Site #:
Antenna type: Sector/Directional antennas
Co-locators: None
Location(s): Rooftop (17ft. above rooftop)
Site access: Locked access door (1)
Last survey date: December 9th, 2020

- This building consists of 12 antennas grouped together in three sectors on the main roof.
- All measurements were below the limit for general public exposure to radiofrequency energy.

Location	RF Exposure Measurements	Hazard category
Accessible location on the roof level	Less than 110% of FCC Occupational Exposure limit.	3
Ground level	Less than 5.7 % of FCC General Public Exposure limit	1

AERIAL VIEW OF THE ANTENNAS

Figure 1 shows an aerial view of the rooftop and platform where the antennas are located.



Figure 1: View from the roof.

SIGNS AND BARRIERS

- Yellow CAUTION signs and orange barriers are located on the rooftop in front of the antennas indicating the potential RF energy area (refer to diagram below).



- **Do not loiter or stand directly in front of these antennas or barriers.**

WIRELESS CELLULAR ANTENNA LOCATIONS

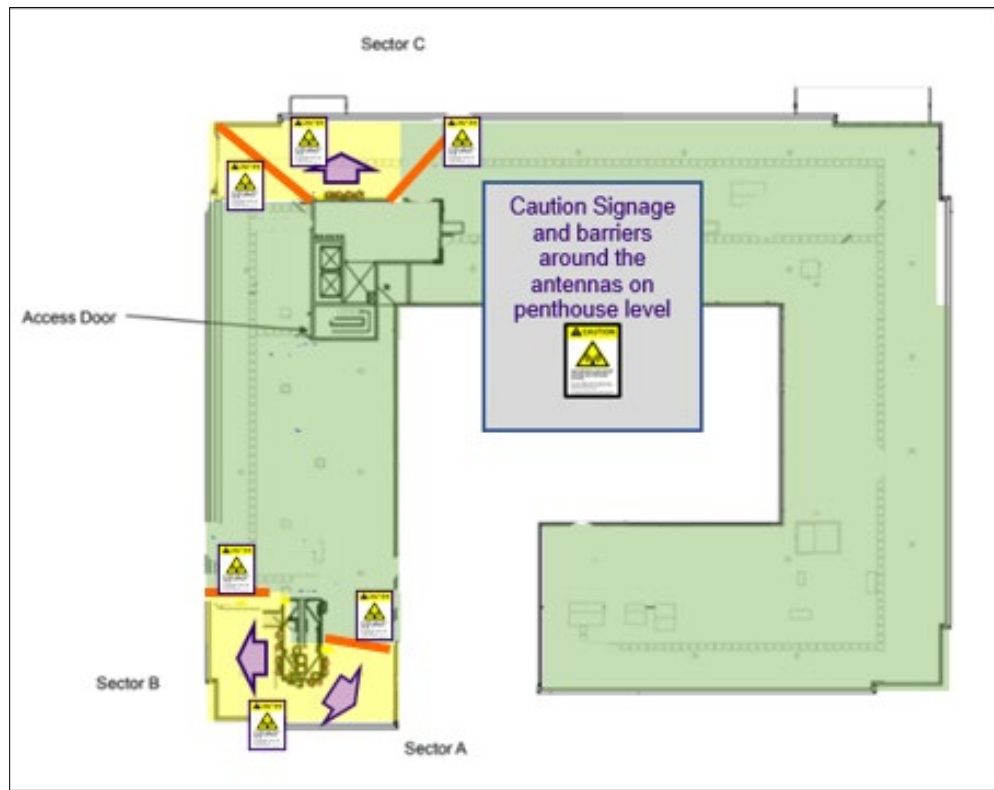


Figure 2: View looking down at the roof of Lander Hall Building.






Symbols/ Color	Definitions	Signage
	Direction of mounted antenna or directional RF energy	NA
	Mounted antenna/panel	NA
	Stanchion/barrier	NA
Category 1	Area where RF fields are too weak to cause exposures greater than general public limit SAFE FOR GENERAL PUBLIC	No signage
Category 2	Area where RF fields could potentially be greater than general public limit but less than occupational limit NOT SAFE FOR GENERAL PUBLIC BUT SAFE FOR WORKERS.	
Category 3	Area where RF fields could potentially be greater than occupational worker limit but less than five times the occupational limit. NOT SAFE FOR GENERAL PUBLIC. RESTRICTED FOR TRAINED WORKERS.	

Table 1: Symbols and color legends, definitions and required posting.

Visit the [Radiofrequency: Wireless Cellular Antennas](#) page on the EH&S website for more information.

Contact EH&S at 206.543.0463 or radsaf@uw.edu with questions.